

Revanta

Luxury Apartments, Lam, Guntur.

The Next Level In Life...
Simply Embrace It!

A sensibly priced Luxury



Welcome to privileged living!

Welcome to **Revanta** - a well planned Luxury Apartment from PAGADALA. **Revanta** has an elegant facade and a design that is contemporary and inspiring. The sunshine home is a pleasant way to spend your time throughout life - the real character of this home is that it reflects your personality and fits in perfectly with your modern lifestyle. Perpetual happiness is a bonus at **Revanta**. Choose privileged living, Choose **Revanta**.

The strategic location at Lam, Guntur, next to Agricultural University is in tune with the fast developing area and Amaravathi, the upcoming capital.

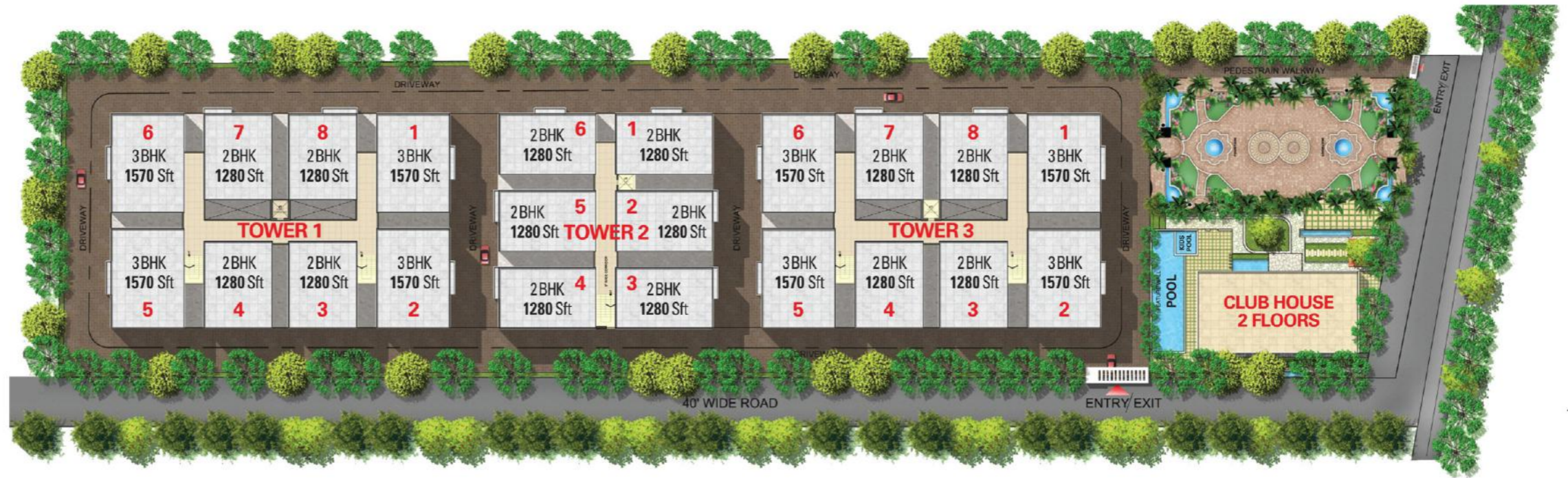


Thoughtful Design and Architecture

Blending aesthetics, art and functionality, **Revanta** tells a story of craftsmanship. The clean lines and space management is the reason why **Revanta** is so elegant and pleasing to be a part of. The home has been designed keeping in view the lifestyle of the present day and for years to come. One of the key elements of Architecture at **Revanta** is absolute balance in provision for fresh air and natural light. Life feels stunningly beautiful at this abode... step in.

Day to day living made hassle-free

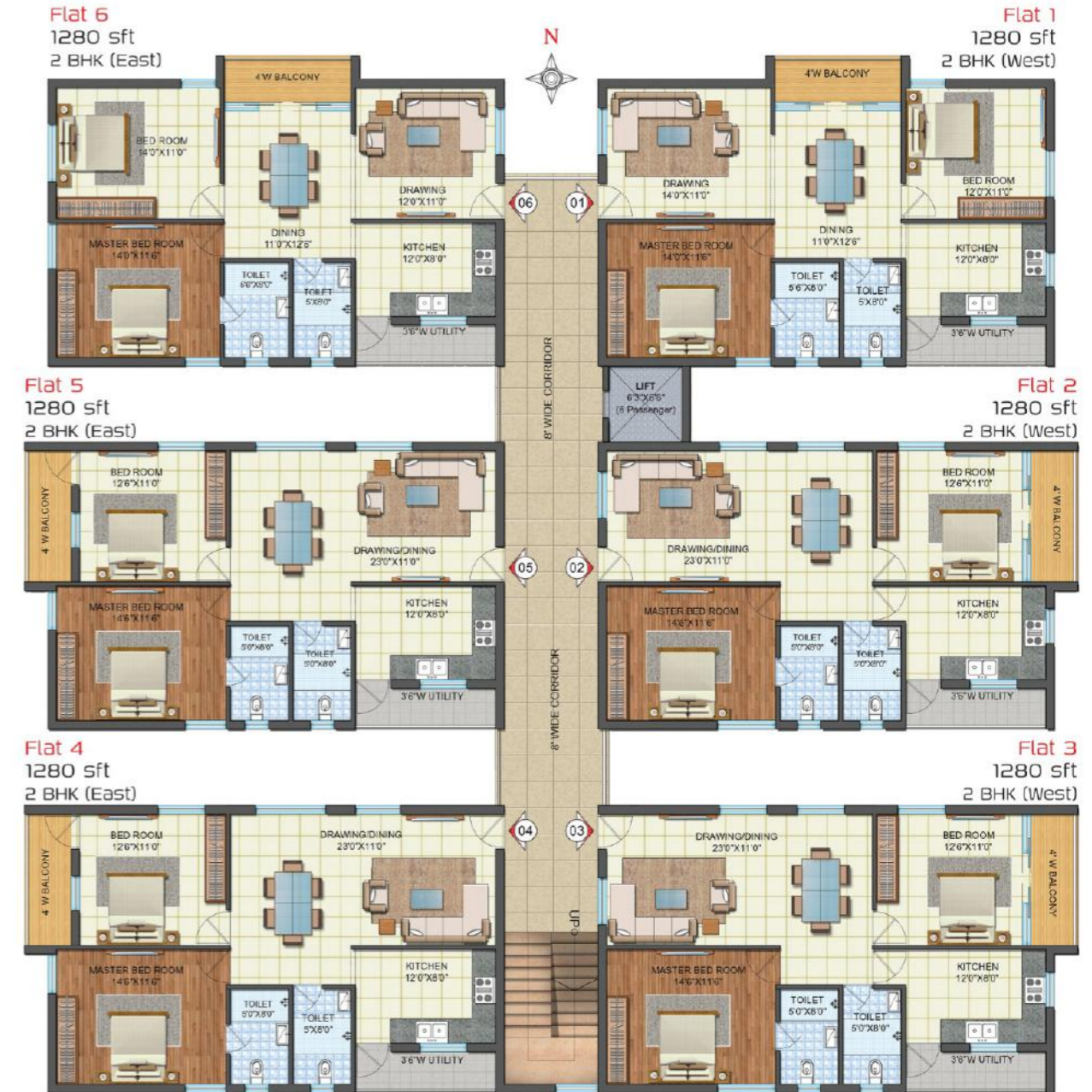
- Thermally efficient super structure
- Maximum day lighting & cross ventilation
- Lush landscaping with native plants
- Central Park and Club house
- Premium amenities & facilities
- Play zone for children



Master Plan



Typical Floor Plan - **TOWERS 1 & 3**



Typical Floor Plan - **TOWER 2**



Only the best materials make Revanta Specifications

STRUCTURE:

R.C.C. framed structure. Footings, columns, beams and slab in R.C.C. in M20 grade concrete or higher grade concrete designed for wind and earthquake.

SUPER STRUCTURE:

Solid Light weight cement blocks/red bricks for the walls in cement mortar.

PLASTERING:

INTERNAL: Single coat with Sponge finish.

EXTERIOR: Plastering in two coats with sponge finish.

DOORS:

MAIN DOOR: Teak wood frame and HDF designer skin moulded paneled door shutters.

INTERNAL DOORS: Teak wood frame and HDF designer skin moulded paneled door shutters with standard fittings & locks.

WINDOWS: Window frames in UPVC/Aluminium with glass panels fitted with standard hardware.

PAINTING:

EXTERNAL: Exterior texture paint with exterior emulsion paint of Asian / Equivalent.

INTERNAL: Smooth wall putty finish with acrylic emulsion paints of Asian / Equivalent over a coat of primer.

FLOORING:

First quality Vitrified tile flooring in living room, bedrooms and kitchen.

KITCHEN:

Granite platform with stainless steel sink/Carysil sink, ceramic tile dado up to 2' height above kitchen platform, Provision for exhaust.

BATHROOMS AND TOILET:

Granite Counter top/Pedestal Type Wash Basin with hot and cold wash basin mixer

WC flush tank of Hindustan / Parryware or equivalent

Hot and cold mixer with shower

Provision for geysers in toilets

All fittings are chrome plated

Tiles up to 7' height

Ceramic non slippery flooring

ELECTRICAL:

Concealed wiring of Finolex or equivalent make Fire retardant wiring in conduits for lights, fan, plug and power plug points of Finolex make or equivalent make.

Power outlets for air-conditioners in all bedrooms.

Power outlets for geysers in all bathrooms.

Power plug for cooking range chimney, refrigerator, microwave ovens, mixer grinder in kitchen.

Adequate Plug points for refrigerator, TV & audio systems etc.

3-phase supply for each unit and individual meter boards.

All electrical fittings of MK/Clipsal or equivalent make.

TELECOM:

Telephone points in all bed rooms & drawing room.

CABLE TV:

Provision for cable in all bedrooms & living room.

LIFT:

One automatic lift for each block.

GENERATOR:

Power Back up generator.

Unwind, Relax and Rejuvenate when you feel like it! State of the Art Club House

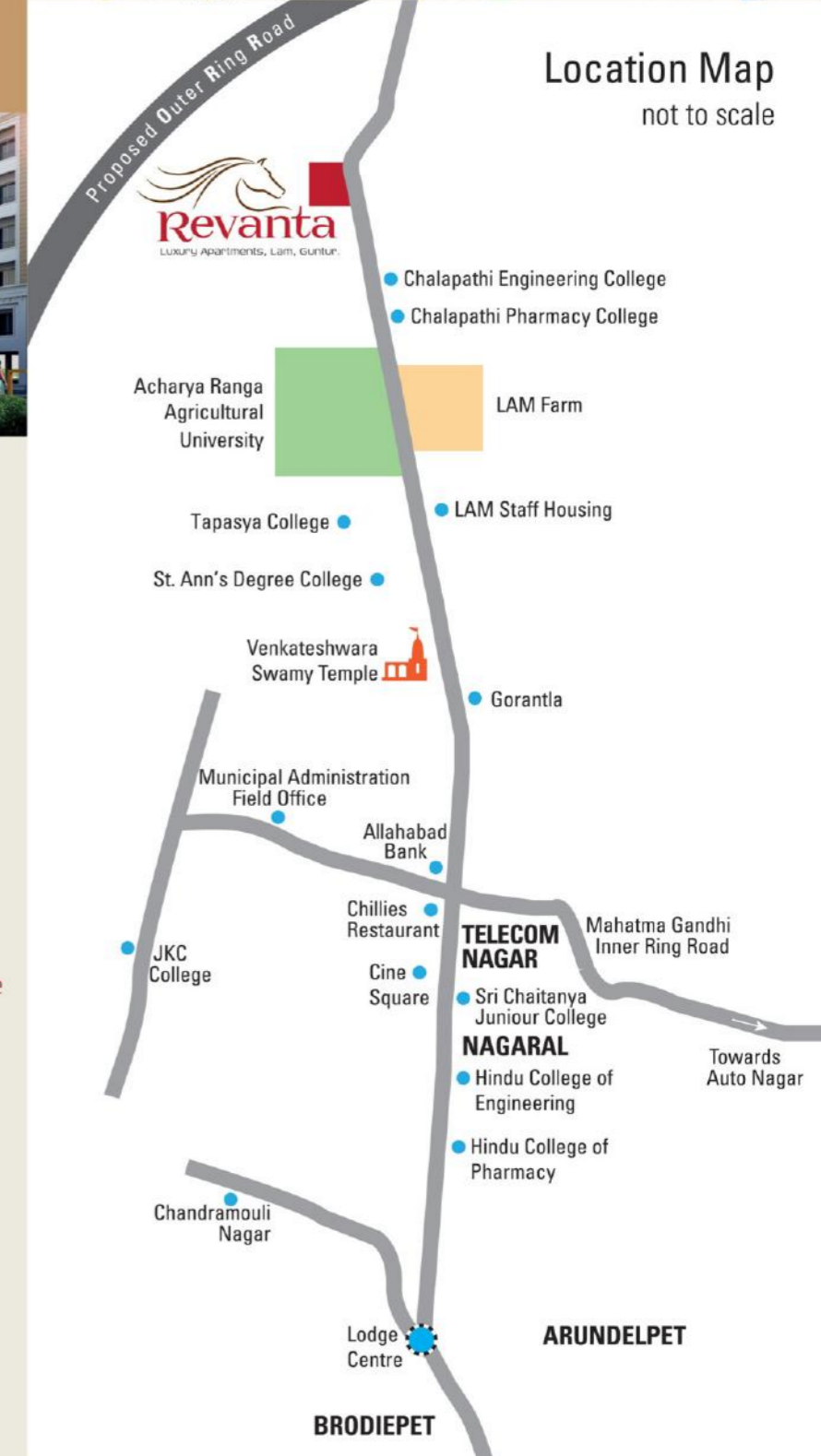


Features so exciting, life feels complete at home

- State of the Art Club House
- Lush Landscaping and Green Park
- Air Conditioned Private GYM
- Health & Fitness Centre
- Yoga & Meditation Area
- Exclusive Swimming Pool
- Library & Leisure Area
- Table Tennis / Billiards Area

Prime location with a promising future

- Beautiful green views from the drawing room
- A very peaceful and serene location
- Adjacent to New Agricultural University, Guntur
- Abutting main corridor connecting Guntur City, and New Seed Capital City - Amaravathi
- 5 Min Drive from Business Hub of Guntur City
- 15 Min Drive to the New Capital Amaravathi
- Vicinity of Educational HUB with Schools, Colleges and Universities
- 5 Min Drive to Proposed 200 Feet ORR
- Greenery all around and clean air



**PAGADALA - Connecting life,
future and beautiful homes.**

Being a part of a reputed construction giant,
that has already delivered millions of square feet of
world-class residential and office spaces across south India,
PAGADALA believes in delivering homes to match
the aspirations and expectations of the
current generations in a creative,
qualitative and refreshing way. The ventures are planned in
such a way that each home will have ample light,
air and design with aesthetics to
extend a satisfying living experience to its customers.
The focus is on blending comfortable luxuries
plus amenities with sensible and smart
pricing into one exciting and happy package.

Satisfying the customer
who thinks about tomorrow's conveniences today is
PAGADALA'S everyday mission.



PAGADALA Constructions Pvt. Ltd.

Corporate Office:

#8-10, Fortune Chambers, 5th Floor, Image Gardens Lane, Madhapur,
Hi-Tech City, Hyderabad - 500081 TELANGANA, INDIA.
040-6622-0809, enquiry@pagadala.in

Branch Office:

D. No.: 5-87-22, Sai Balaji House, 1st Floor, Main Road,
Lakshmipuram, Guntur - 522007 ANDHRA PRADESH, INDIA.
0863-324 6666, enquiry@pagadala.in

www.pagadala.in
www.pagadalaconstructions.com

NOTE : This brochure is purely a conceptual presentation and not a legal offering.
The promoters reserve the right to make changes in elevation, specifications and plans as deemed to fit.